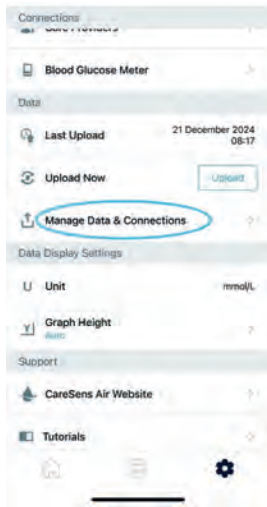
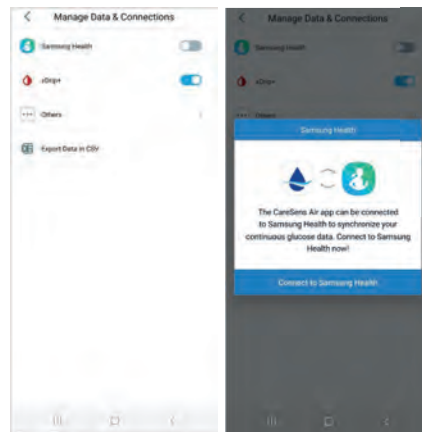


How to pair your CareSens Air CGM with Samsung Health



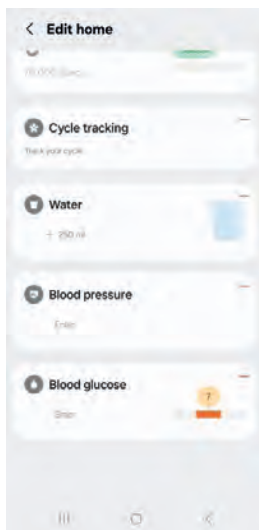
1. Open the CareSens Air app, select settings and then select **Manage Data & Connections**



2. Select Samsung Health to connect. The data is now sharing with Samsung Health.



3. Open the **Samsung Health App**.



4. On the app homepage the **blood glucose** category is listed.



5. In the **blood glucose** category, data can be viewed in various ways - via averages, day, month and year.